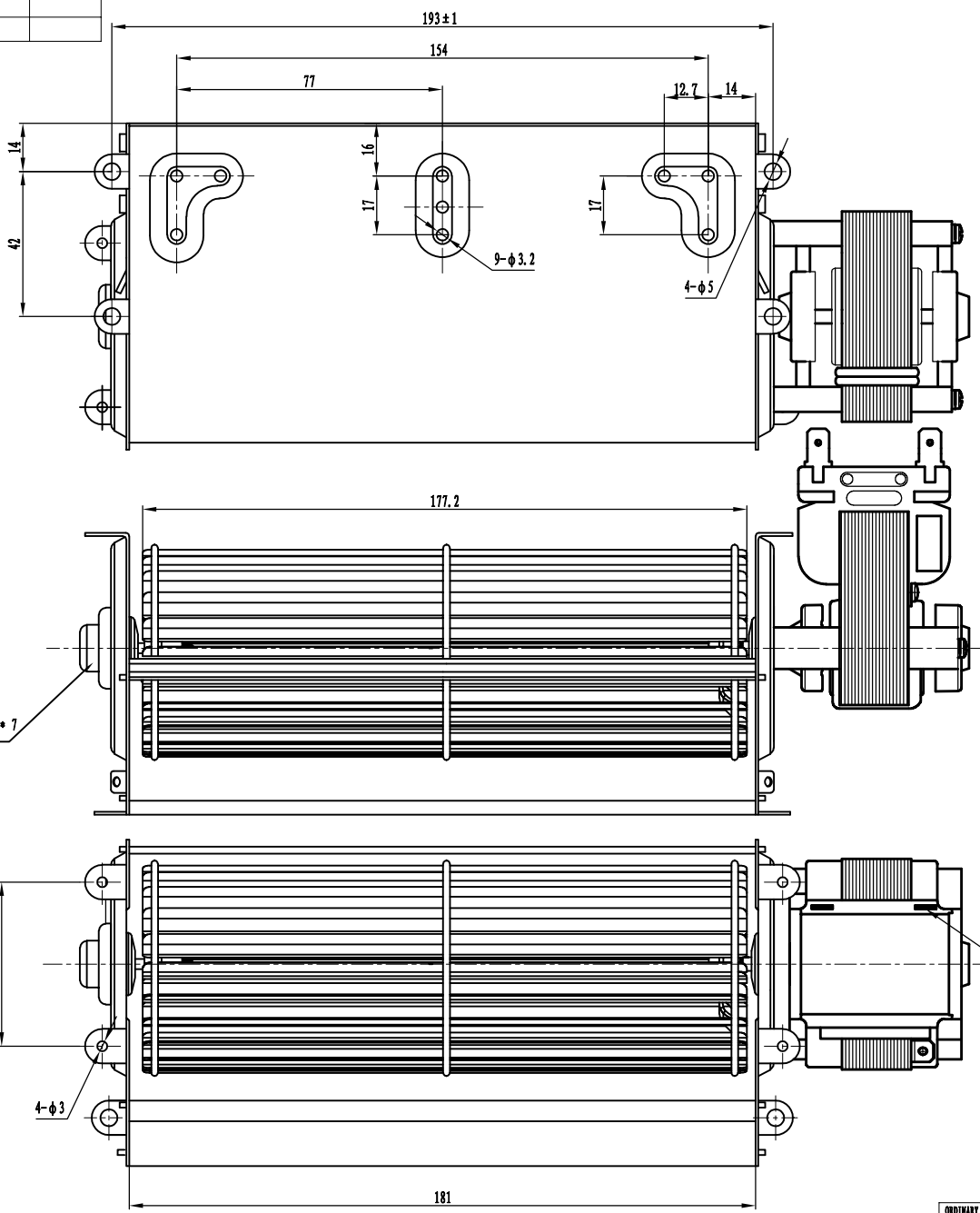
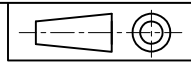
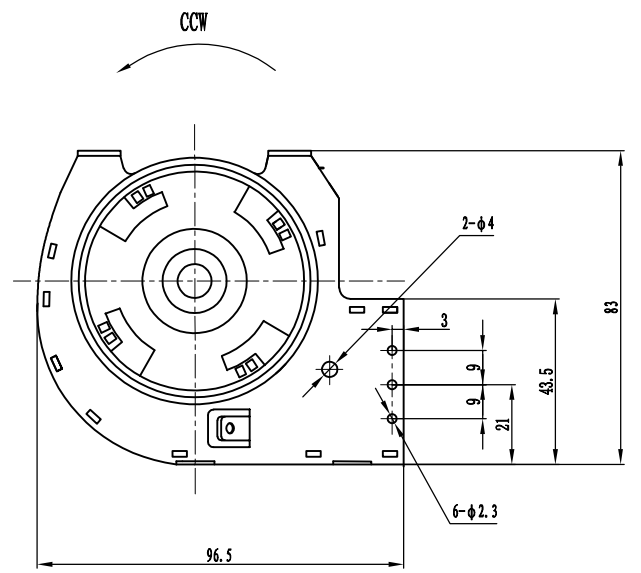


VERSION	A0			
DATE	220303			



Technical Specification

1. The wheel shall run smoothly, without vibration at 2500 rpm
  2. The wheel shall not swing during running, radial runout > 0.3mm
  3. The wheel surface without burrs, sharp edges, dirt and deformation.
- Material : aluminum strip
4. Connector through φ4 shaft shall bear a lifting force of 5.0kg without displacement within 10s
  5. The housing bottom plate and cross stripe thickness is 0.8mm, side plate thickness is 1.0mm, the motor holding plate thickness is 1.2mm, material : galvanized sheet
  6. The housing edge without burrs, flashing; The housing surface without scratch, dirt, rust, deformation, etc; The riveting point without falling of and looseness;
  7. The fit between holding plate and housing without falling of and looseness.
  8. Wheel blade thickness: 0.4mm \* 24 pieces φ . 3 stainless steel shaft
  9. The housing material shall pass the 24 hours salt spray test, corrosion area < 13.5%
  10. Motor parameters:
    - 1) Voltage 110V/60Hz
    - 2) Speed 1700±200rpm
    - 3) Power 27W
    - 4) Current 450mA
    - 5) Insulation class B



Red silicone anti vibration sleeve, built-in φ3\*φ10\*7 copper base sleeve bearing

REMARKS: △ OBLIGATORY INSPECTION ITEMS. ▽ ORDINARY INSPECTION ITEMS BY JIGS AND GAUGES. ▽ SPECIAL INSPECTION ITEMS BY CUSTOM-BUILT JIGS AND GAUGES.  
 △ SPECIAL INSPECTION ITEMS BY SPECIAL TESTING INSTRUMENTS AND FACILITIES.  
 [ ] IMPORTANCE SYMBOLS: [A] CRITICALS: CUSTOMERS REQUESTED DIMENSIONS AND SPEC. [B] IMPORTANT: INFLUENCE ON THE FINISHED MACHINES PERFORMANCES AND SPEC.

										RETEK MOTION CO., LIMITED					
										OUTLINE					
										RCO. 222. 1. Y6120A					
ORDINARY TOLERANCE		J		MARKS REV.		Q.D DATA	REV. DATA	REV. ENG	STAMPED	INTX (A/W)	BOM CODE		NET WEIGHT (G)		SCALE
BASIC DIMENSION	H	J	E	DRAWN		STANDARDIZED					PROCESS IDENTIFIER			1: 1	
0-4	±0.05	±0.1	±0.3								S				
4-16	±0.07	±0.2	±0.5												
16-63	±0.1	±0.3	±0.7	CHECKED											
63-250	±0.2	±0.5	±1.2												
250-1000	±0.3	±0.8	±2.0	PROCESS		APPROVED					TOTAL: 1 PAGES			1/1	